

Drawing Number
SD/500/08

Notes

1. All dimensions are in millimetres.
2. Chamber size to be the largest possible in the area available.
3. Storage capacity to be based on 100% run-off from surrounding impermeable area.
4. Soakage tests in accordance with BRE Digest 365 are required prior to construction. Soakage rate for the trial to be three times the design rate.
5. No part of the soakaway may fall beneath the carriageway or footway.
6. Cover and frame to be Class D400 Boudgarnked, HD, and Kitemarked and have a protective coating complying with BS EN 124: 1994.
7. Bricks to be Engineering Class B laid in English bond in mortar to designation (i) to SHW series 2400.
8. Precast concrete chambers shall comply with BS 5911-3, 2002.
9. Perforations to be 40 dia at 450 centres.
10. Top ring may be unperforated.
11. Finish to internal concrete to be F1 on formed surfaces and U2 on unformed surfaces.
12. Ends of pipes shall be neatly built into chamber and finished flush with Class 1 mortar.
13. The nearest joints to chamber shall not be restricted by concrete.
14. Petrol interceptors may be required where soakaways are used.
15. Chambers more than 3m deep must be provided with galvanised ladders.
16. Surface level tolerance -15 min -50 max

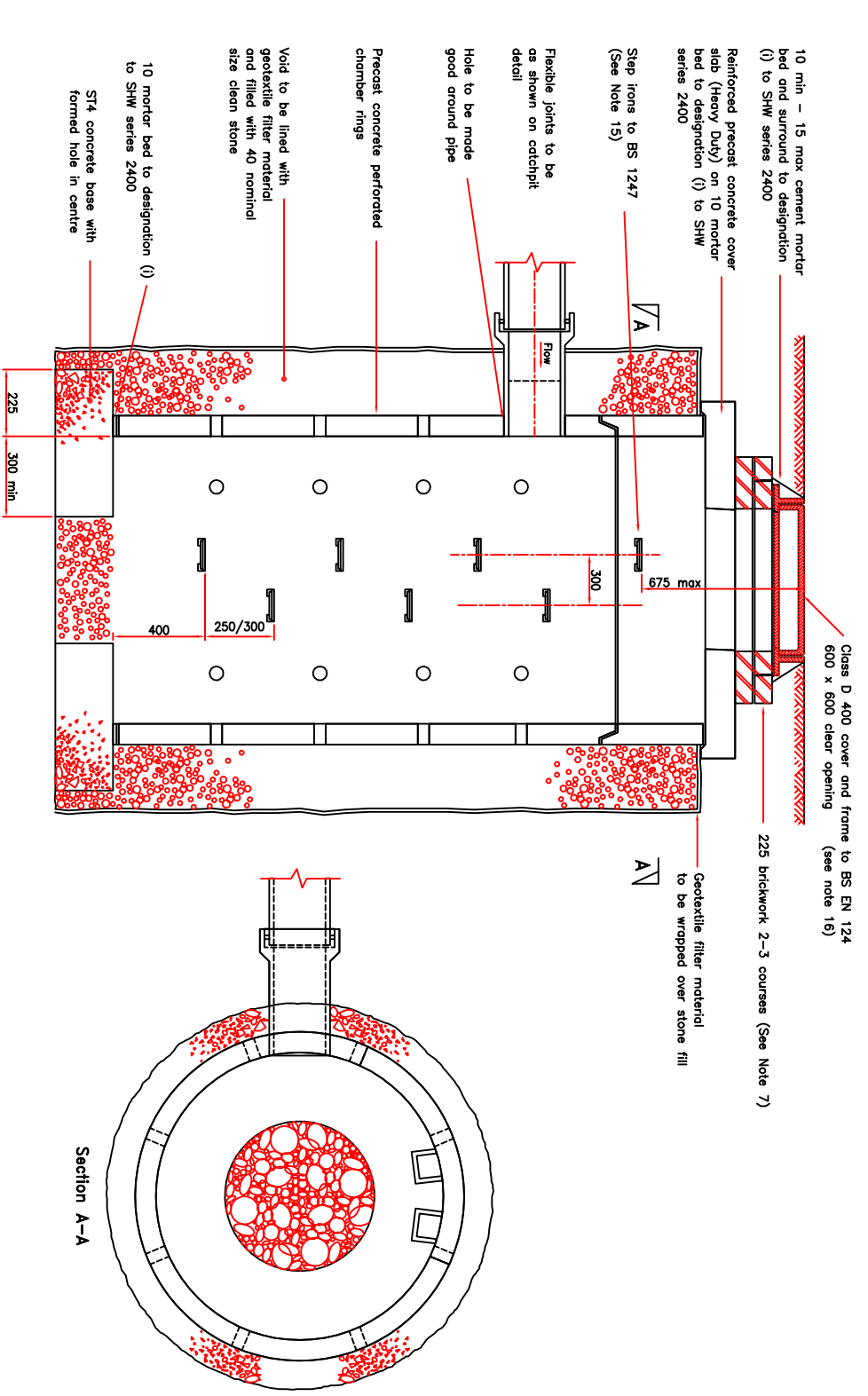
Do not scale this drawing

Rev	Date	Notes revised and updated	Checked
A	07/06		JW

Drawing No.	Revision
SD/500/08	A

Scale	Drawn	Checked	JW	Approved	Date
NOT TO SCALE	RWJY	JW	JR	JR	JULY 06

Reproduced from the Ordnance Survey Mapping with the permission of the Controller of Her Majesty's Stationary Office. Crown Copyright. Unauthorised reproduction infringes Crown Copyright and may lead to prosecution or civil proceedings. Royal Borough of Windsor and Maidenhead - Licence Number LD088110



Section A-A

Community Services Directorate
Town Hall, St. Ives Road
Maidenhead, Berks.
SL6 1RF
Tel: 01628 798888
Fax: 01628 796774
http://www.rdwtr.gov.uk



Project
STANDARD DRAWINGS
Title
SOAKAWAY
PRECAST CONCRETE CONSTRUCTION

Drawing Number
SD/500/09

- Notes
1. All dimensions are in millimetres
 2. Standard ditches are unlined with the same profile. Protection at outfalls is always required.
 3. All work to existing ditches must have the consent of the EA Local Authority and the landowner.
 4. Pre-cast concrete paving slabs to BS 7263.
 5. Formed surfaces to be Class F1 finish.
 6. Unformed surfaces to be Class U2 plain finish.
 7. Outfall Type 2 may be constructed in Class B engineering bricks laid in English Bond in mortar to designation (1) SHW Series 2400. Brickwork must be finished with a brick on edge coping.

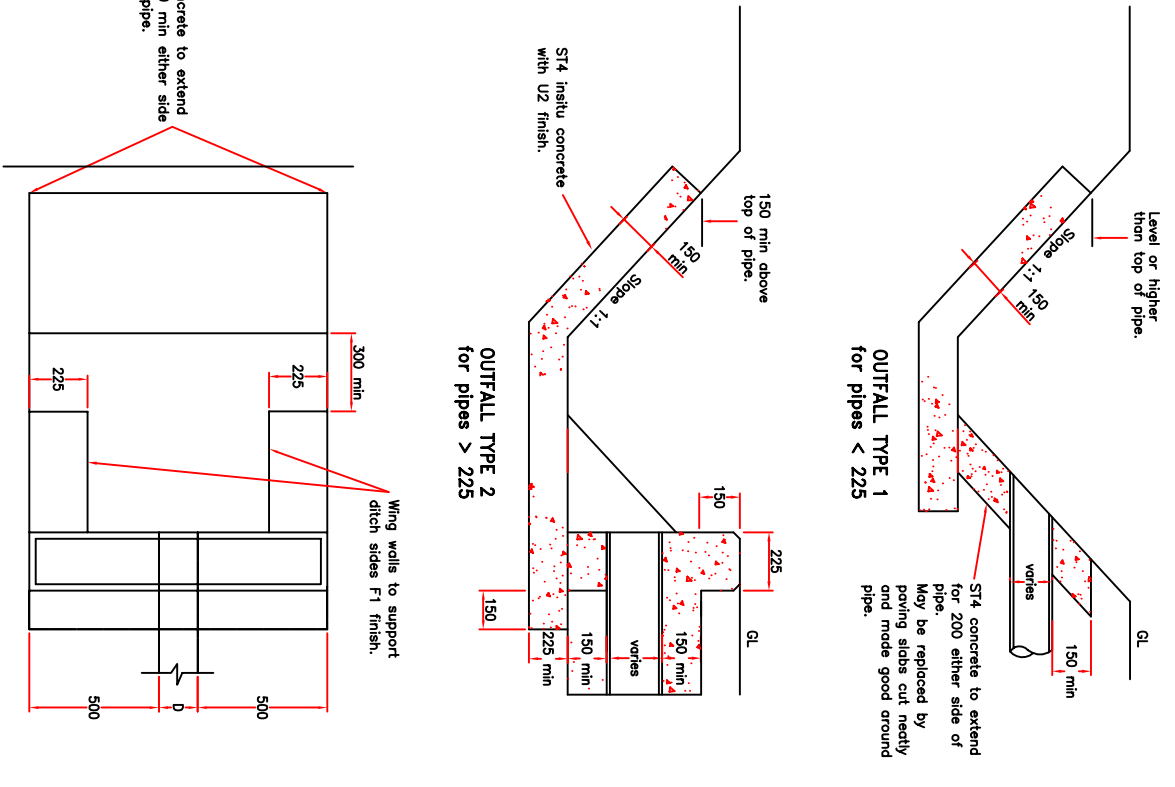
Do not scale this drawing

Rev	Date	Notes revised and updated	Checked
A	07/06		JW

Drawing No.
SD/500/09

Revision	Date
A	

Scale NOT TO SCALE
 Drawn RW/JV Checked JW Approved JR
 Date JULY 06

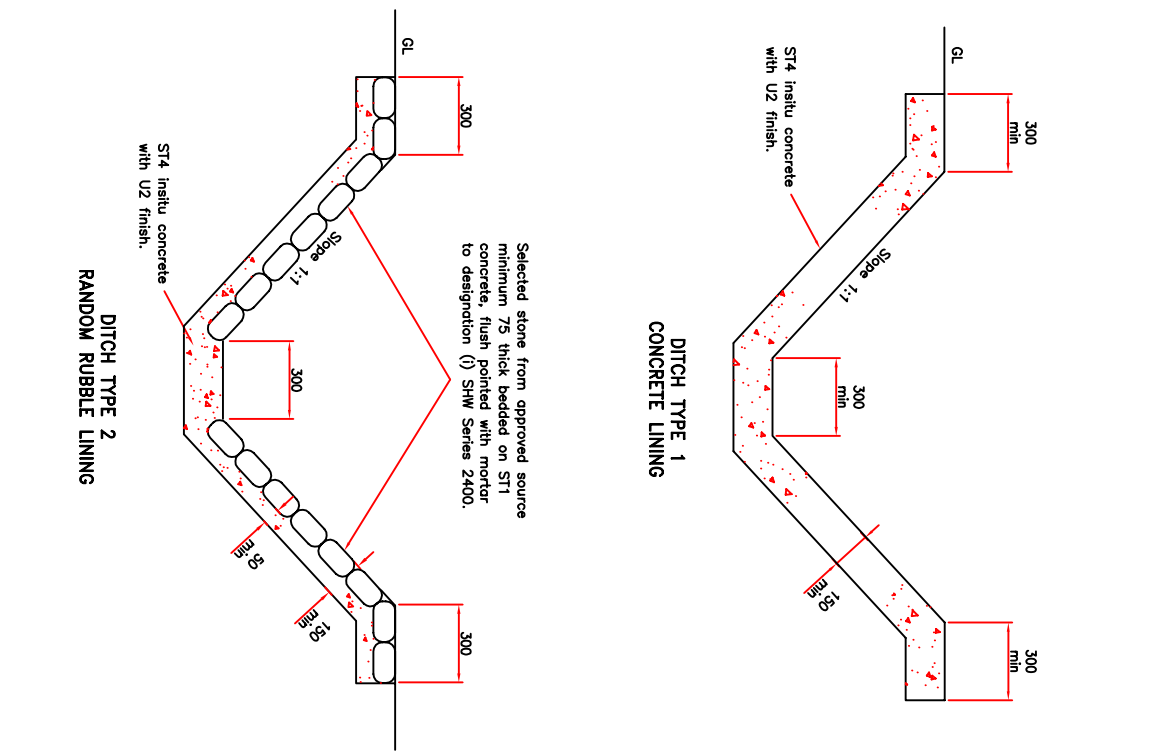


OUTFALL TYPE 2 - Plan

STANDARD DRAWINGS

LINED DITCHES AND OUTFALLS

Concrete to extend 500 min either side of pipe.

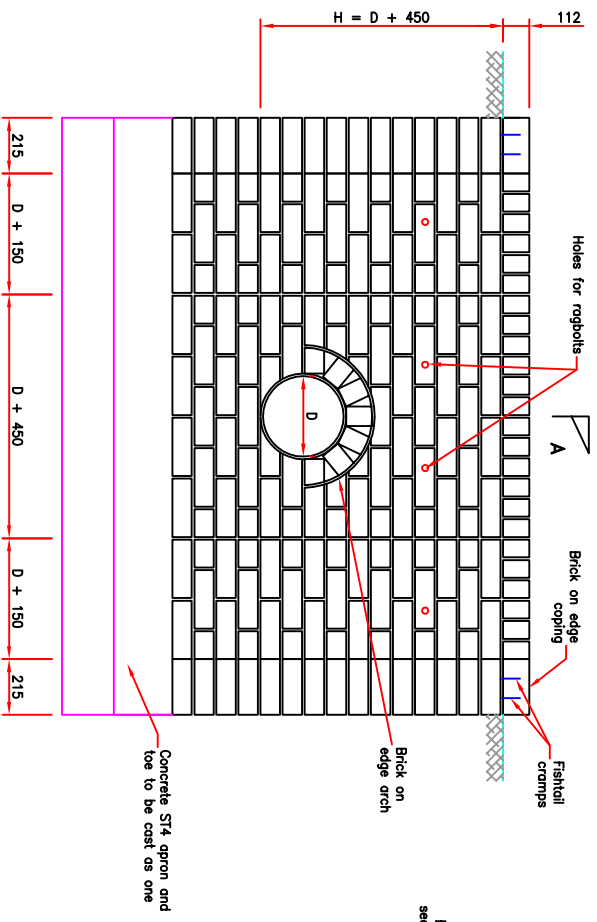


**DITCH TYPE 1
CONCRETE LINING**

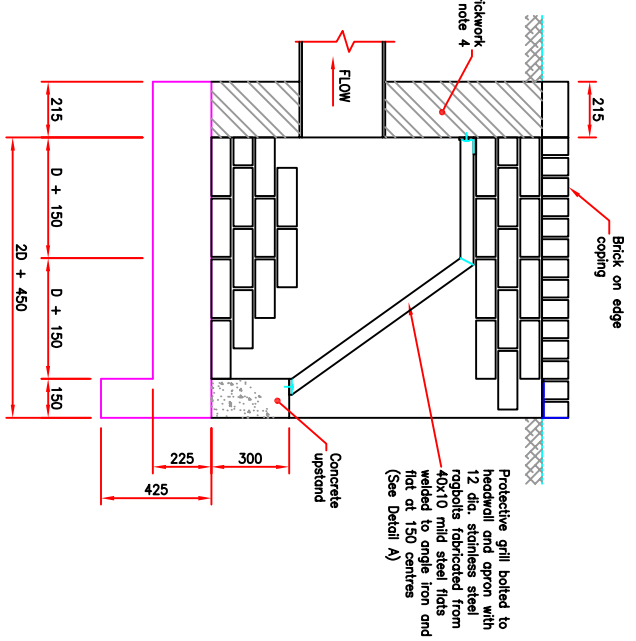
**DITCH TYPE 2
RANDOM RUBBLE LINING**

Community Services Directorate
 Town Hall, St. Ives Road
 Maidenhead, Berks,
 SL6 1RF
 Tel: 01628 798888
 Fax: 01628 796774
 http://www.rdwmm.gov.uk

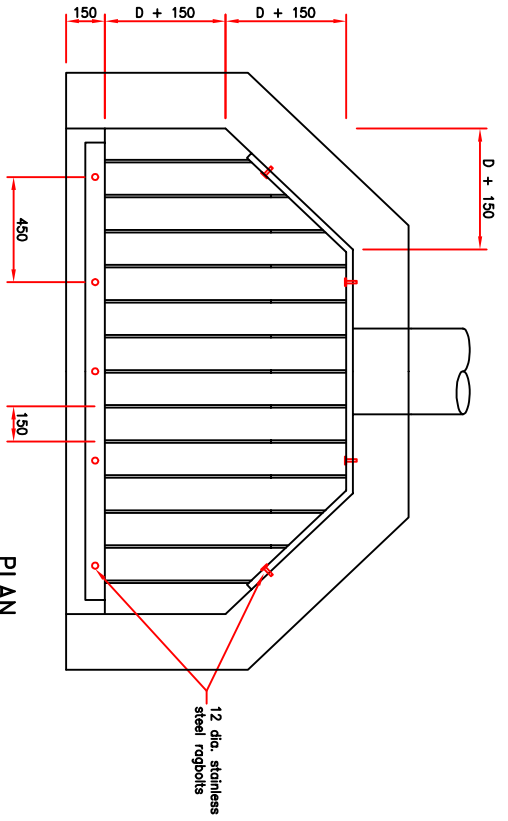




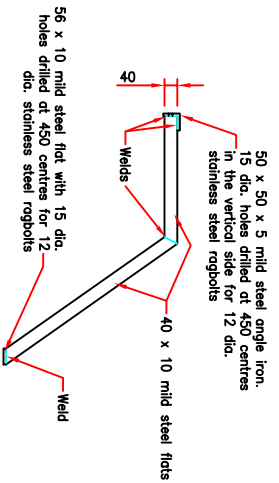
ELEVATION
(Grill omitted for clarity)



SECTION A-A



PLAN



DETAIL A
Prefabricated Protective Grill

Project
STANDARD DRAWINGS

Title
HEADWALL TYPE 1
UPSTREAM FROM PIPE
BRICKWORK CONSTRUCTION

Community Services Directorate
Town Hall, St. Ives Road
Maidenhead, Berks,
SL6 1RF

Tel: 01628 798888
Fax: 01628 796774
http://www.tdwm.gov.uk



Drawing Number
SD/500/10

- Notes**
- All dimensions are in millimetres unless shown otherwise.
 - Piping of ditches must have the consent of the EA and the landowner.
 - Brickwork constructed in English Bond in Class B engineering bricks to BS 3921 finish pointed with mortar to designation (1) SHW Series 2400.
 - Brickwork to be:
215 Thick for $H < 1.2m$
327 Thick for $H > 1.2m$
 - Concrete to be grade ST4.
 - Unformed surfaces to be U2 plain finish.
 - Protective grilles must be fitted where pipes over 300 dia. are accessible to children.
 - Grill assembly to have hot dip galvanized finish to BS EN ISO: 1461 after fabrication.
 - Purpose made units may be used with the approval of the Engineer.

Do not scale this drawing

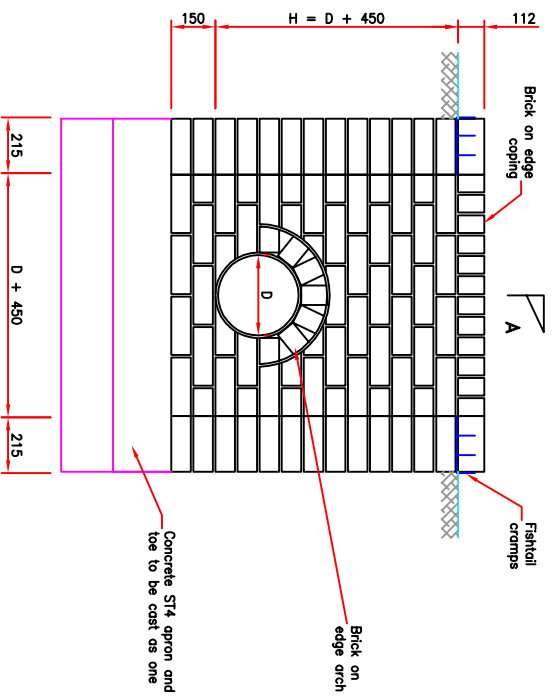
Rw	Date	Notes revised and updated	JW	Checked
A	07/06	Notes revised and updated	JW	

Drawing No. SD/500/10	Revision
	A

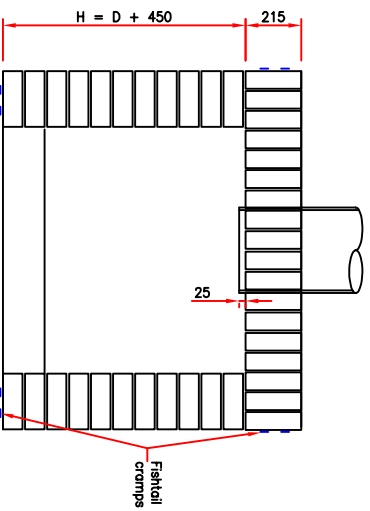
Scale NOT TO SCALE	Date JULY 06
------------------------------	------------------------

Drawn RWJY **Checked** JW **Approved** UR

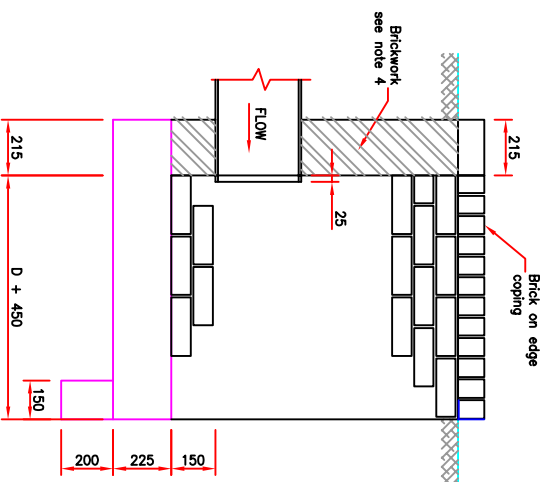
Reproduced from the Ordnance Survey Mapping with the permission of the Controller of Her Majesty's Stationery Office. Unauthorised reproduction of this drawing is prohibited. All rights reserved. Lead to presentation or civil proceedings. Royal Borough of Windsor and Maidenhead - Licence Number LA085118



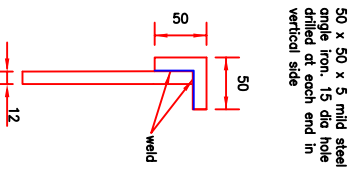
ELEVATION
(Grill omitted for clarity)



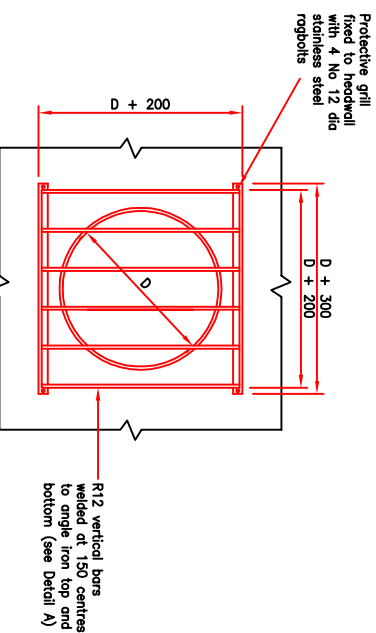
PLAN



SECTION A-A



DETAIL A
(bottom grill similar)



PROTECTIVE GRILL
(See Notes 7 & 8)

Community Services Directorate
Town Hall, St. Ives Road
Maidenhead, Berks,
SL6 1RF

Tel: 01628 798888
Fax: 01628 796774
http://www.dwm.gov.uk



Project
STANDARD DRAWINGS
Title
HEADWALL TYPE 2
DOWNSTREAM OF PIPE
BRICKWORK CONSTRUCTION

Drawing Number
SD/500/11

- Notes**
- All dimensions are in millimetres unless shown otherwise.
 - Piping of ditches must have the consent of the EA and the landowner.
 - Brickwork constructed in English Bond in Class B engineering bricks to BS 3921 finish pointed with mortar to designation (i) SWW Series 2400.
 - Brickwork to be:
215 Thick for $H < 1.2m$
327 Thick for $H > 1.2m$
 - Concrete to be grade ST4.
 - Unformed surfaces to be U2 plain finish.
 - Protective grills to be fitted as shown where pipes over 300 dia are accessible to children.
 - Grill assembly to have hot dip galvanised finish to BS EN ISO: 1461 after fabrication.

Do not scale this drawing

Rev A Date 07/06 Notes revised and updated

Drawing No. SD/500/11

Scale NOT TO SCALE

Drawn RWJY Checked JW Approved JR
Date JULY 06

Reproduced from the Ordnance Survey Mapping with the permission of the Controller of Her Majesty's Stationary Office. Copyright © lead to presentation or other proceedings. Royal Borough of Windsor and Maidenhead - Licence Number: L468118

Drawing Number
SD/500/12

- Notes
1. All dimensions are in millimetres unless shown otherwise.
 2. Requelling may only be used with the approval of the Engineer.
 3. This construction may also be used for outfalls.
 4. For outfall details see SD/500/9.

Do not scale this drawing

Rev	Date	Notes revised and updated	Checked
A	07/06	Notes revised and updated	JW

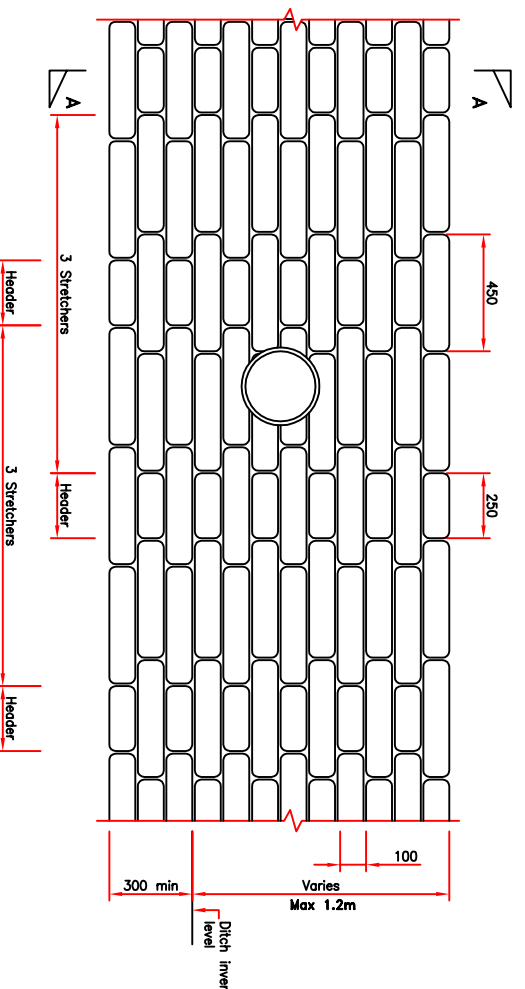
Drawing No.
SD/500/12

Scale NOT TO SCALE

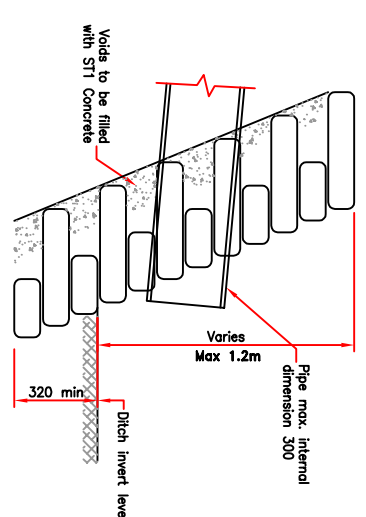
Revision	Date	Approved JR
A		

Drawn RWJY Checked JW Date JULY 06

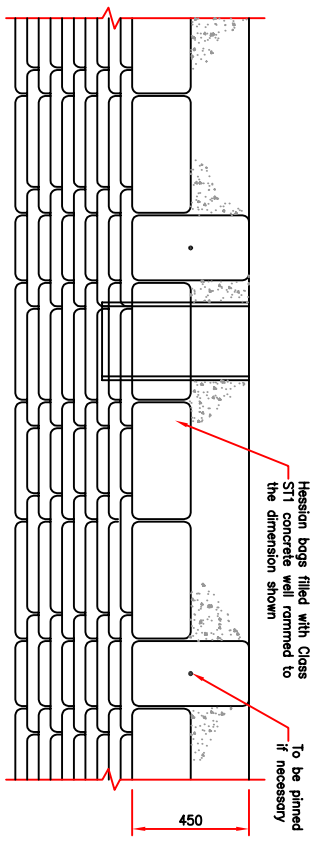
Reproduced from the Ordnance Survey Mapping with the permission of the Ordnance Survey. All rights reserved. No part of this publication may be reproduced, stored in a retrieval system, or transmitted in any form or by any means, electronic, mechanical, photocopying, recording, or otherwise, without the prior written permission of the Ordnance Survey. Unauthorised reproduction infringes Crown Copyright and may lead to prosecution or civil proceedings. Royal Borough of Windsor and Maidenhead - Licence Number LD48618



ELEVATION



SECTION A-A

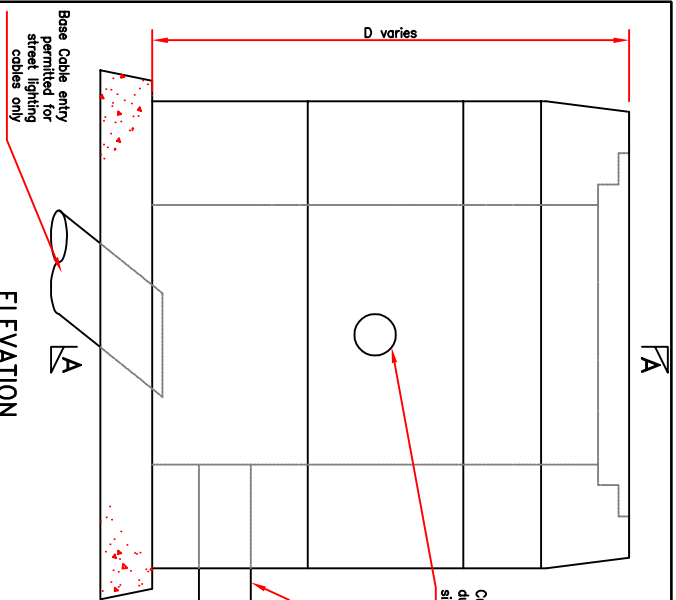


PLAN

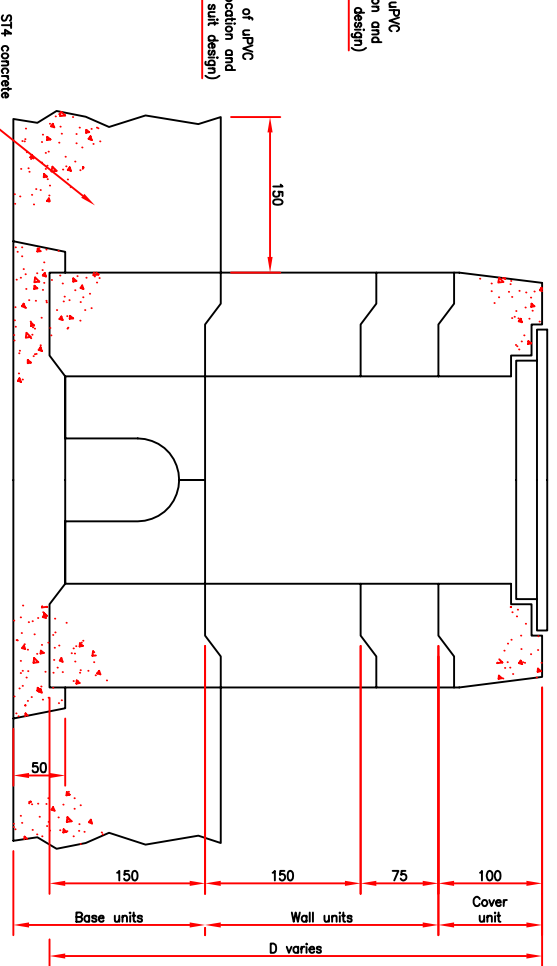
Community Services Directorate
Town Hall, St. Ives Road
Maidenhead, Berks,
SL6 1RF
Tel: 01628 798888
Fax: 01628 796774
http://www.rbwm.gov.uk



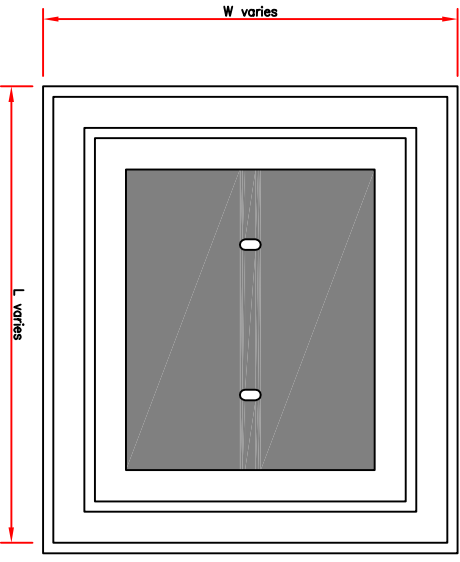
Project
STANDARD DRAWINGS
Title
HEADWALL TYPE 3



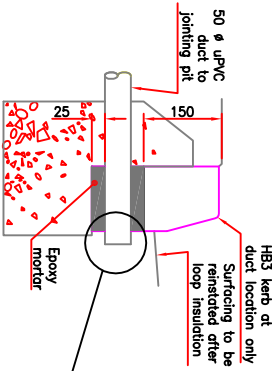
ELEVATION



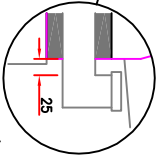
SECTION A-A



PLAN



DUCT CONNECTION TO TRAFFIC LOOP



DETAIL

CHAMBER TYPE	INTERNAL DIMENSIONS			CONSTRUCTION (Codes of Standard Units)			BADGE MARK
	L	W	D	Wall	Base	Cover and Frame	
Street Lighting D(1) D(2)	430	280	475	H/W/75 H/W/100	V/B3/D V/B4/D V/B5/D	V/C1/D 10T L/L	Street Lighting
	430	280	800	H/W/150	V/B5/D	10T L/L	
Traffic Signals E F	610	455	750	V/W/E/5 V/W/E/10 V/W/E/150	V/B2/E V/B2/F	V/C1/E 10T L/L	Traffic Loop Traffic Signals
	685	455	850	V/W/F/5 V/W/F/100 V/W/F/150	V/B2/F	V/C1/F	
Sp	1300	1000	To suit	Brickwork see Note 4	ST4 Concrete	HD 11.5 Ton	

CHAMBER TYPES

(See Notes 9, 10 & 11)

Project STANDARD DRAWINGS

Title

FOR TRAFFIC SIGNAL AND STREET LIGHTING CABLES

Drawing Number SD/500/13

Notes

- All dimensions are in millimetres
- All chambers to be located in footway, traffic island, verge. The position of all chambers and ducts to be agreed with the Engineer.
- Size of chamber used will depend on the depth and number of ducts to be accommodated.
- Standard Units shall be as manufactured by Glondal Ltd, or similar approved.
- Chamber Type Sp shall be constructed in English Bond Class B Engineering bricks to BS 3971. The courses shall be horizontal and depends in vertical alignment. Joints shall not exceed 10 and shall be flush pointed internally as work proceeds.
- Base units for all chambers may be replaced with cost-in situ ST4 concrete 150 thick. Formed surfaces to be Class F1. Unformed surfaces to be Class U2 plain finish.
- All joints between chamber and ducts shall be made good with Class 1 mortar. The duct shall be surrounded by 150 thick min ST4 concrete.
- Covers to be galvanised with an unlock and lift device and badged/inked Traffic Loop or Street Lighting as appropriate.
- See SD/500/3 for cable duct details.
- Duct and box for traffic signal loops shall be manufactured and installed to the approval of the Engineer.
- Where channel blocks are used the ducts shall extend to 25 in front of the face of the channel block.

Do not scale this drawing

Rev	Date	Notes revised and updated	Checked
A	07/06	Notes revised and updated	JW

Drawing No.	Revision
SD/500/13	A

Scale NOT TO SCALE

Drawn	Checked	Approved	Date
RWJY	JW	JR	JULY 06

Reproduced from the Ordnance Survey Mapping with the permission of the Controller of Her Majesty's Stationery Office Crown Copyright ©. All rights reserved. No part of this publication may be reproduced, stored in a retrieval system or used in any form or by any means, electronic, mechanical, photocopying, recording or otherwise, without the prior written permission of the Controller of Her Majesty's Stationery Office, London and Maidenhead. Licence Number LA08618

Community Services Directorate
Town Hall, St. Ives Road
Maidenhead, Berks,
SL6 1RF
Tel: 01628 798888
Fax: 01628 796774
http://www.rdwim.gov.uk

