

APPENDIX 1: ACCESSIBILITY MAPS

Windsor & Maidenhead

Access to Employment
By Public Transport and Walking
Wednesday 0800 - 0900

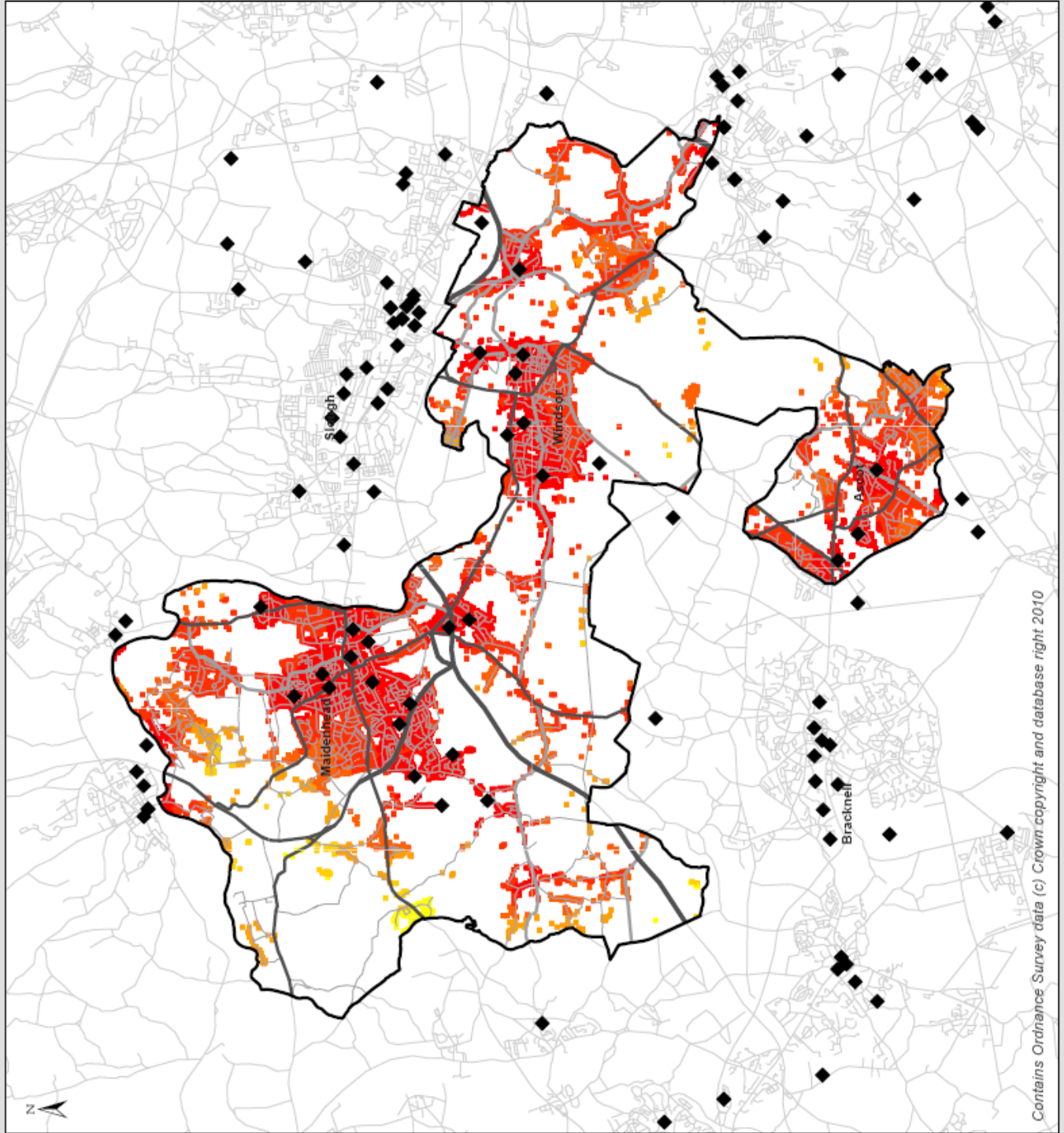
Oct 2011

	within 20 minutes	within 40 minutes
% of Households	89%	99%
% of people in receipt of jobseekers allowance	91%	99%

Total Travel Time (minutes)

- 0 to 10
- 11 to 20
- 21 to 30
- 31 to 40
- 41 to 50
- 51 to 60

◆ Employment



Contains Ordnance Survey data (c) Crown copyright and database right 2010



Windsor & Maidenhead

Access to Primary Schools
By Public Transport and Walking
Wednesday 0800 - 0900

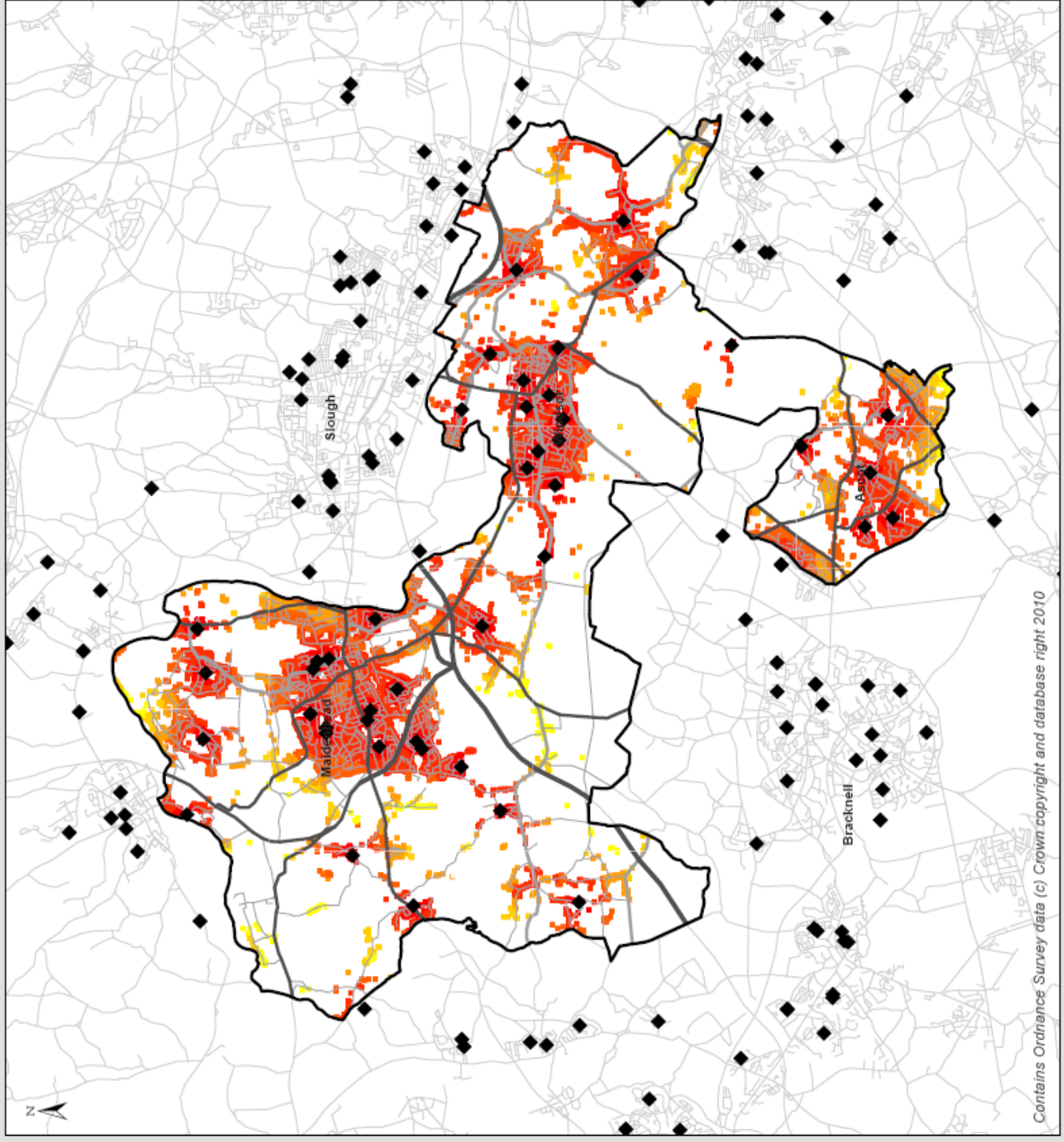
Oct 2011

	within 15 minutes	within 30 minutes
% of Pupils	92%	99%
% of Pupils entitled to free school meals	93%	99%

Total Travel Time (minutes)

- 0 to 5
- 6 to 10
- 11 to 15
- 16 to 20
- 21 to 25
- 26 to 30

◆ Primary Schools



Contains Ordnance Survey data (c) Crown copyright and database right 2010

Windsor & Maidenhead
 Access to Secondary Schools
 By Public Transport and Walking
 Wednesday 0800 - 0900

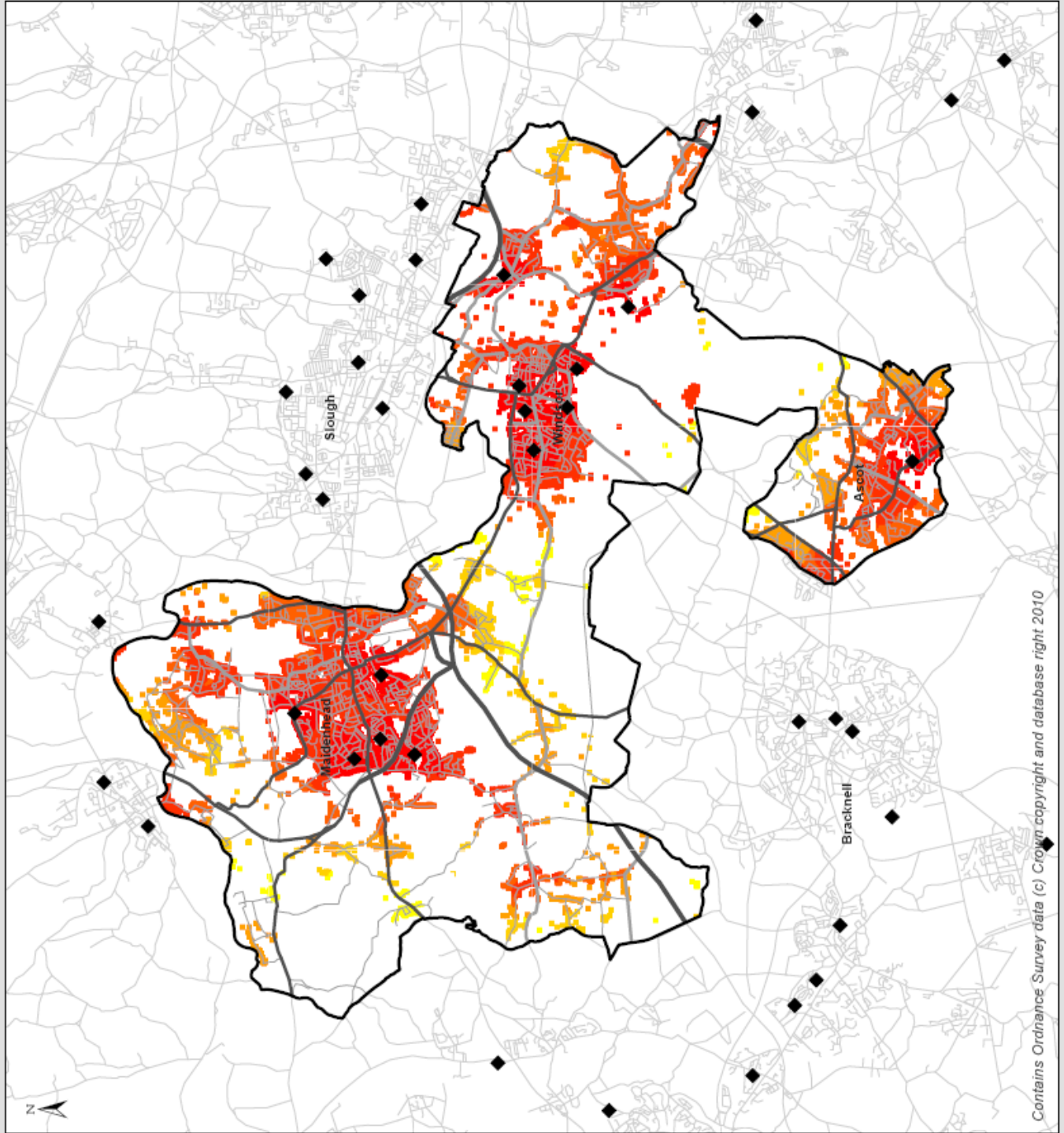
Oct 2011

	within 20 minutes	within 40 minutes
% of Pupils	74%	95%
% of Pupils entitled to free school meals	73%	93%

Total Travel Time (minutes)

- 0 to 10
- 11 to 20
- 21 to 30
- 31 to 40
- 41 to 50
- 51 to 60

◆ Secondary Schools



Contains Ordnance Survey data (c) Crown copyright and database right 2010

Windsor & Maidenhead

Access to Further Education
By Public Transport and Walking
Wednesday 0800 - 0900

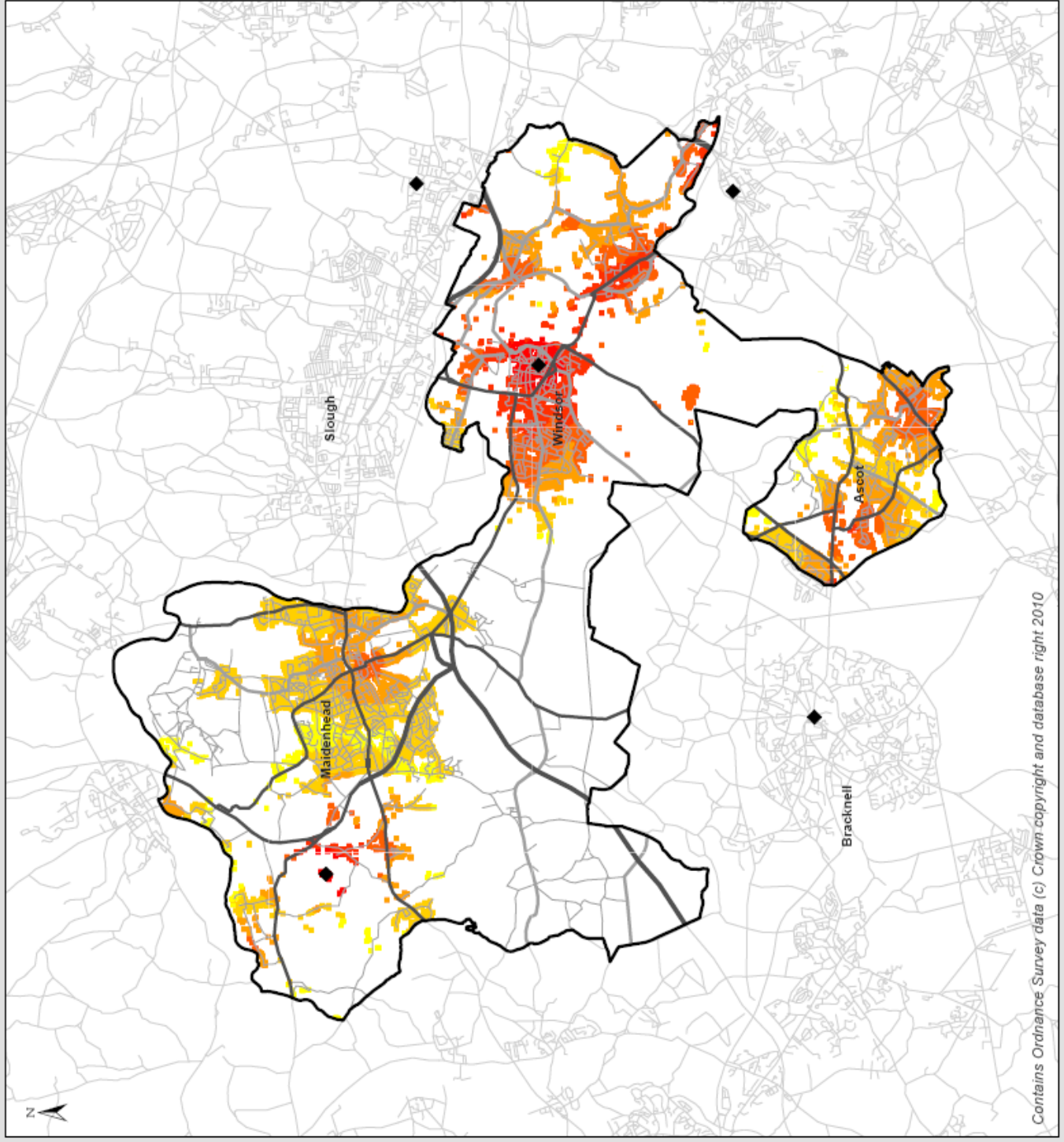
Oct 2011

	within 30 minutes	within 60 minutes
% of Households	32%	92%
% of 16 to 19 year olds	37%	92%

Total Travel Time (minutes)

- 0 to 10
- 11 to 20
- 21 to 30
- 31 to 40
- 41 to 50
- 51 to 60

◆ Further Education Colleges



Contains Ordnance Survey data (c) Crown copyright and database right 2010

Windsor & Maidenhead

Access to GP Surgeries
By Public Transport and Walking
Wednesday 1000 - 1600

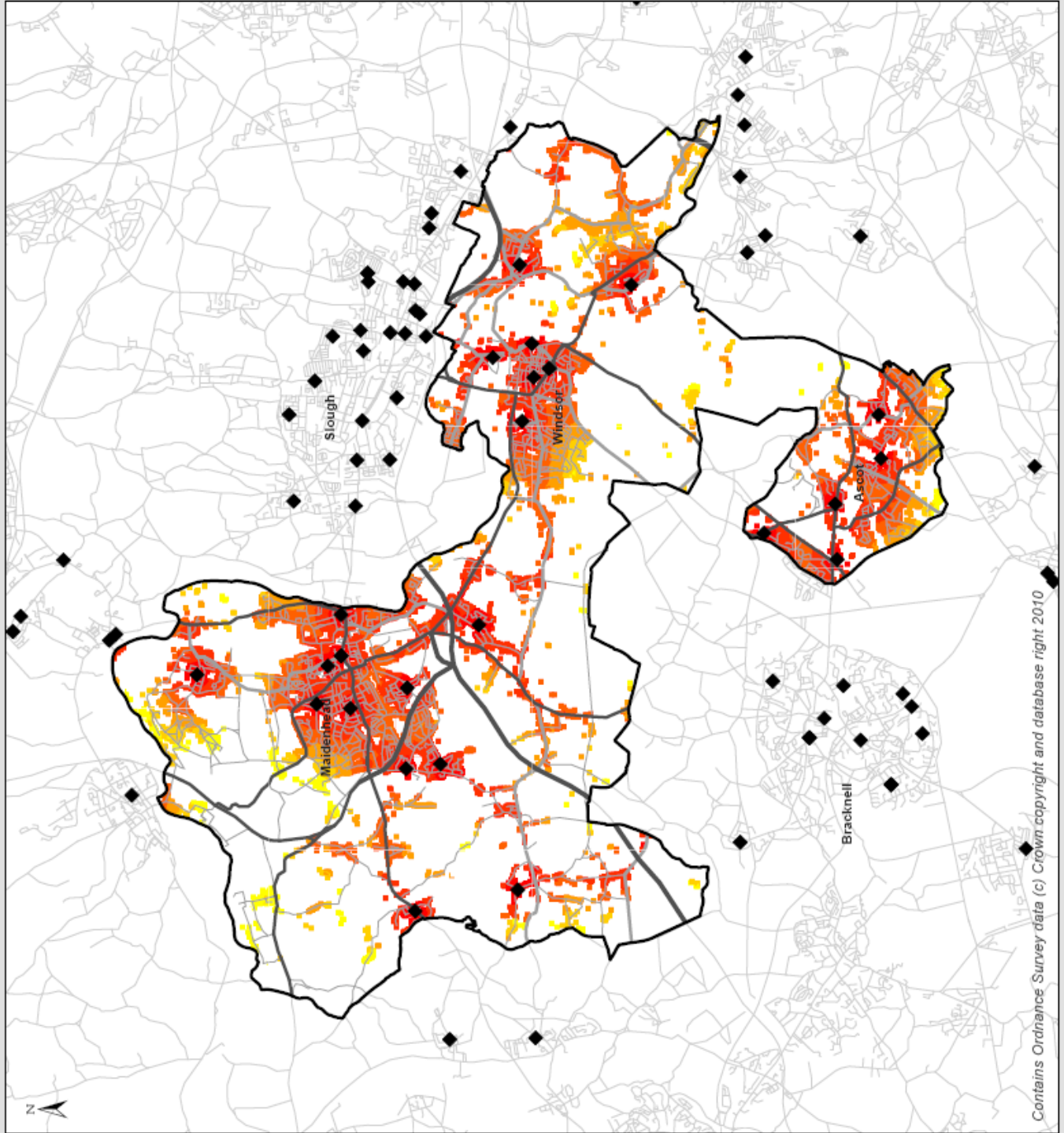
Oct 2011

	within 15 minutes	within 30 minutes
% of Households	87%	99%
% of Households without a car	92%	100%

Total Travel Time (minutes)

- 0 to 5
- 6 to 10
- 11 to 15
- 16 to 20
- 21 to 25
- 26 to 30

◆ GP Surgeries



Contains Ordnance Survey data (c) Crown copyright and database right 2010

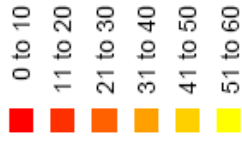
Windsor & Maidenhead

Access to Hospitals
By Public Transport and Walking
Wednesday 1000 - 1600

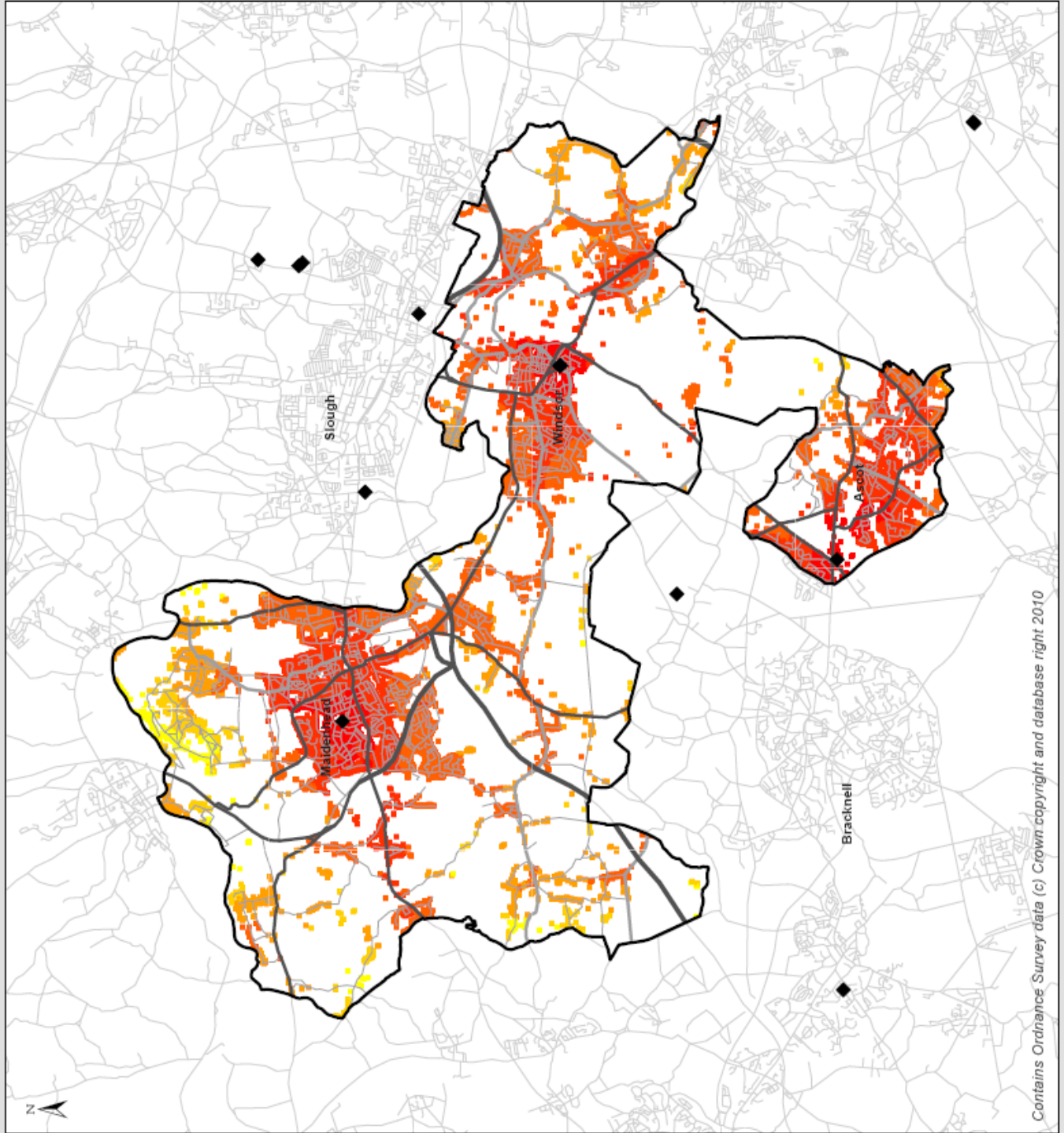
Oct 2011

	within 30 minutes	within 60 minutes
% of Households	90%	100%
% of Households without a car	94%	100%

Total Travel Time (minutes)



◆ Hospitals



Contains Ordnance Survey data (c) Crown copyright and database right 2010

Windsor & Maidenhead

Access to Heatherwood Hospital
By Public Transport and Walking
Wednesday 1000 - 1600

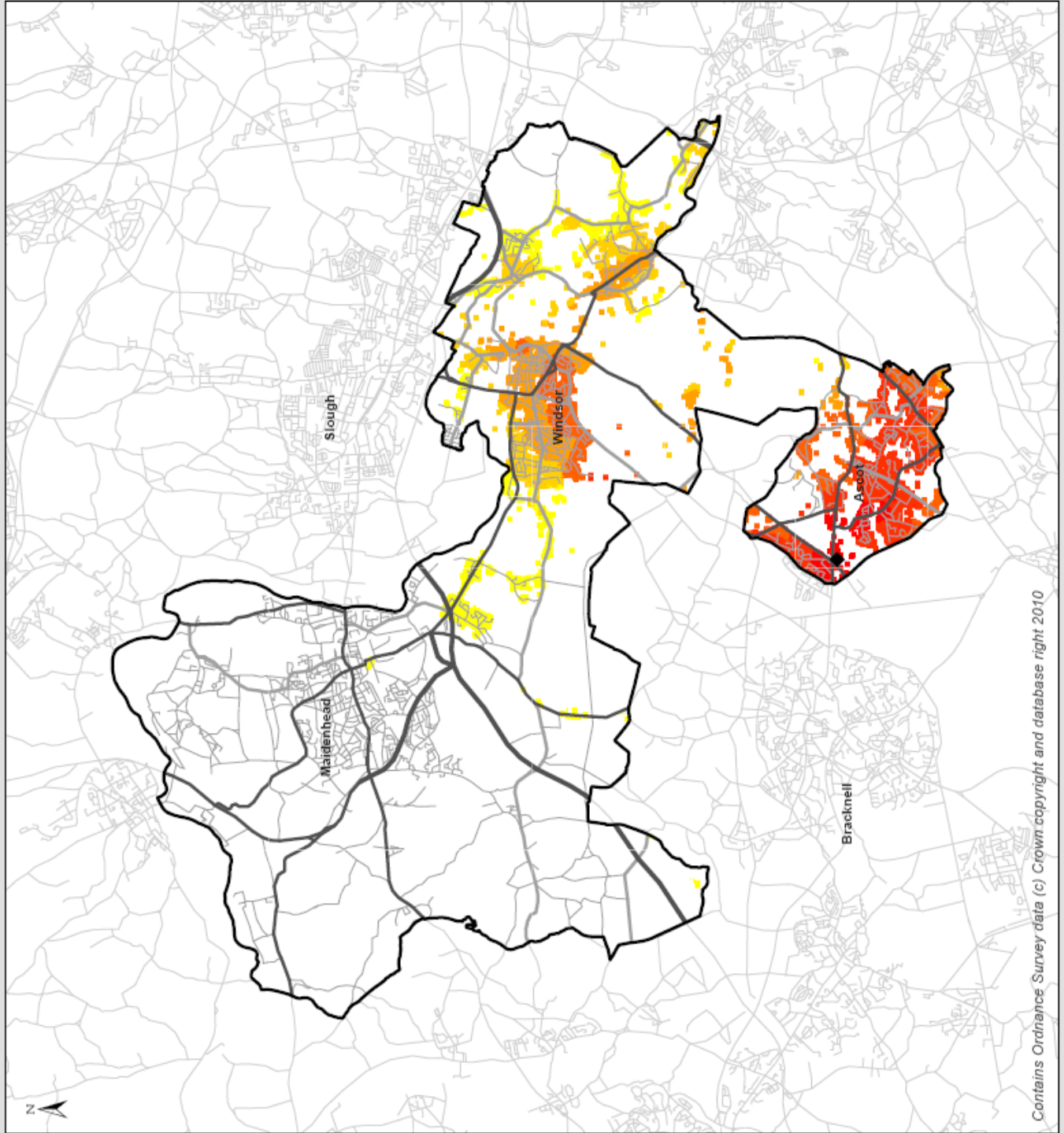
Oct 2011

	within 30 minutes	within 60 minutes
% of Households	17%	49%
% of Households without a car	15%	52%

Total Travel Time (minutes)

- 0 to 10
- 11 to 20
- 21 to 30
- 31 to 40
- 41 to 50
- 51 to 60

◆ Heatherwood Hospital



Contains Ordnance Survey data (c) Crown copyright and database right 2010

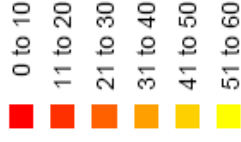
Windsor & Maidenhead

Access to Wexham Park Hospital
By Public Transport and Walking
Wednesday 1000 - 1600

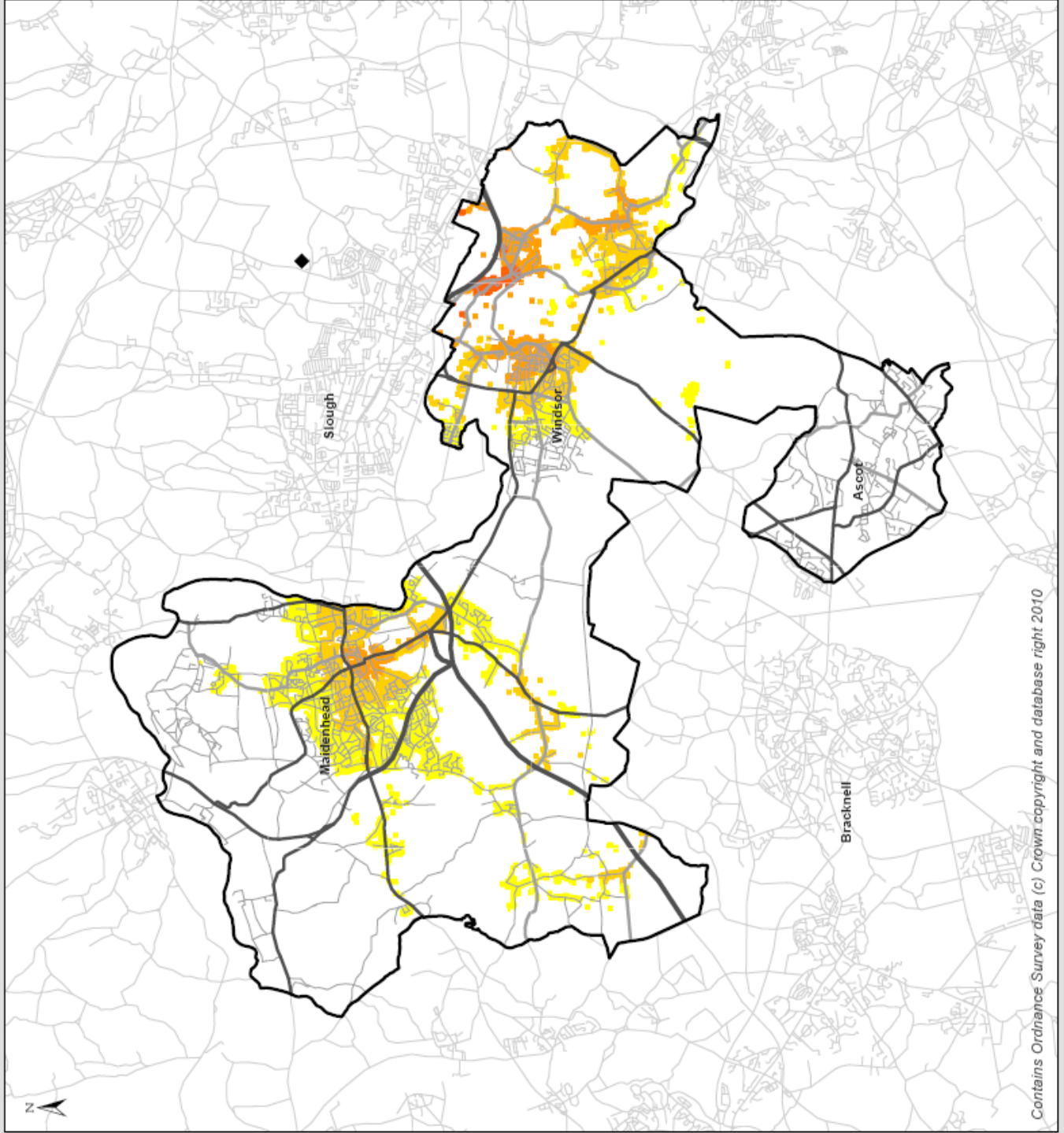
Oct 2011

	within 30 minutes	within 60 minutes
% of Households	1%	71%
% of Households without a car	1%	79%

Total Travel Time (minutes)



◆ Wexham Park Hospital



Contains Ordnance Survey data (c) Crown copyright and database right 2010

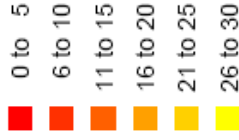
Windsor & Maidenhead

Access to Retail Centres
By Public Transport and Walking
Wednesday 1000 - 1600

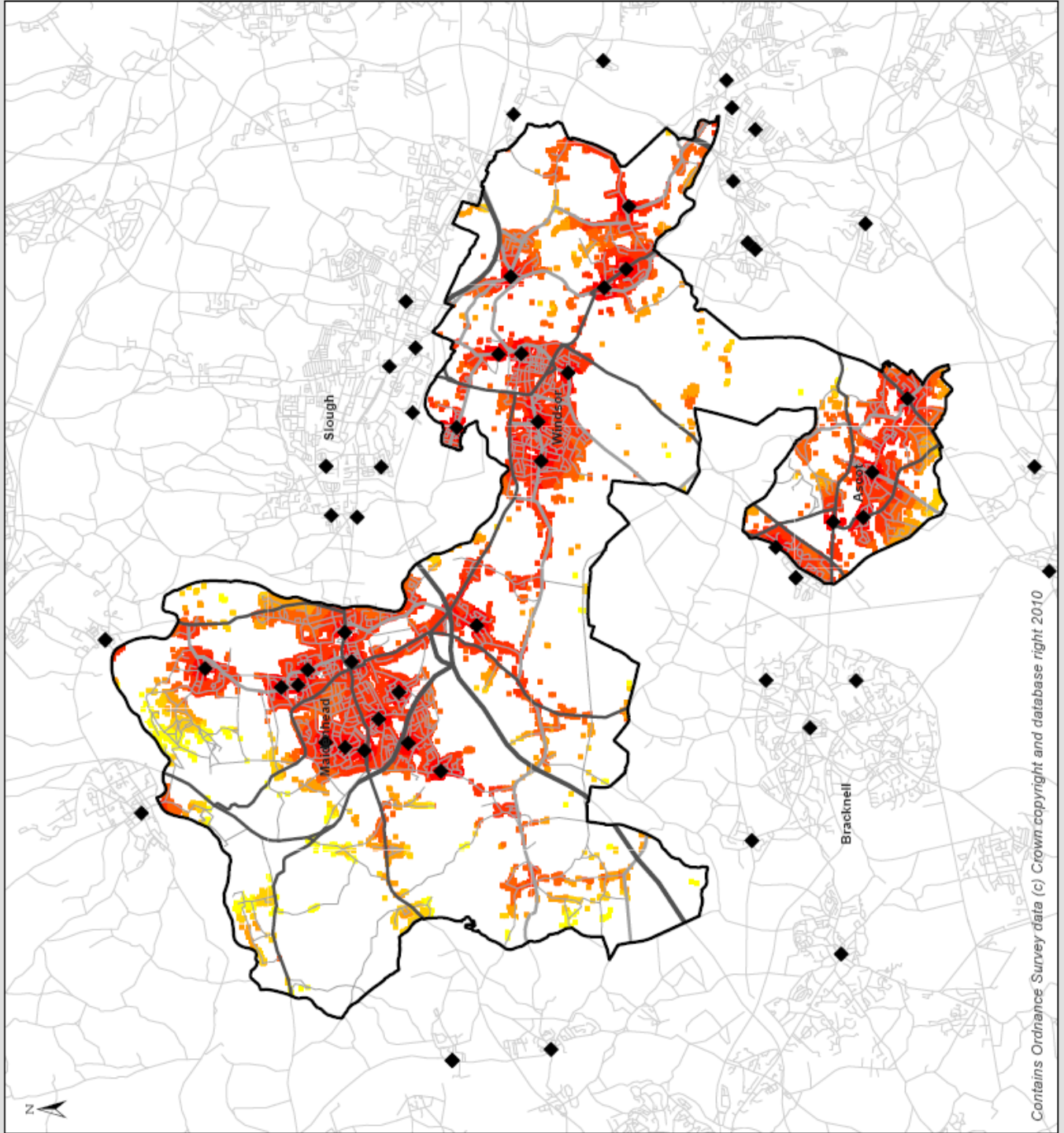
Oct 2011

	within 15 minutes	within 30 minutes
% of Households	93%	99%
% of Households without a car	97%	100%

Total Travel Time (minutes)



◆ Retail Centres



Contains Ordnance Survey data (c) Crown copyright and database right 2010